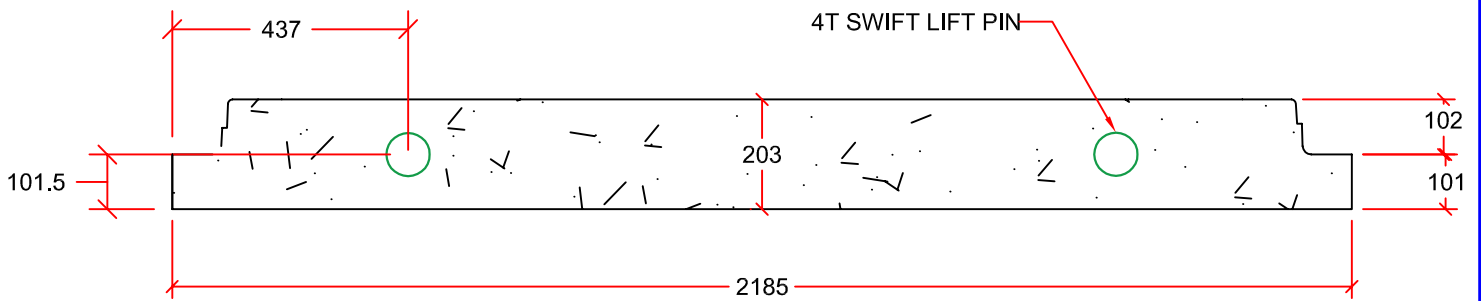



PLAN VIEW

HORIZONTAL INSTALLATION
VERTICAL INSTALLATION



PROFILE VIEW

DRAWN BY:	KIM PHAM	1800mm x 1200mm BASE/PLUG DIMENSIONS IN mm. APPROX MASS 1670 KG. FOR VERTICAL INSTALLATION, 4 SWIFT LIFT PINS ON TOP SURFACE OF BASE. FOR HORIZONTAL INSTALLATION, 2 SWIFT LIFT PINS ON THE TOP SIDE OF PLUG.	 9265 OAK ST. VANCOUVER B.C. PH: 604 269-6700 FAX: 604 261-6751
SCALE:	NTS		
DATE:	NOV. 13, 2015		
DRAWING #:	1800mm x 1200mm BASE/PLUG		
REVISION #:	REV. 1		
CHECKED BY:	TYSON DYCK		