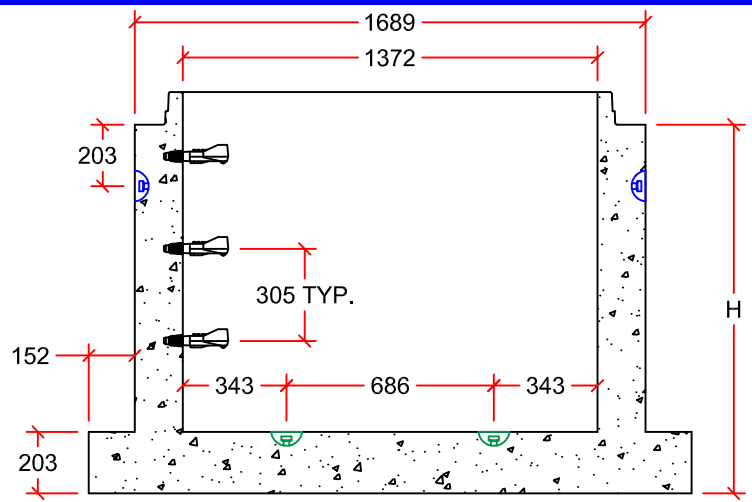
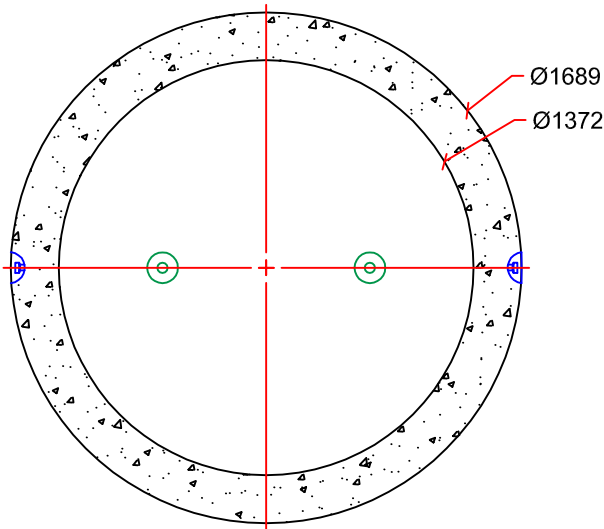


INNER POUR BASE

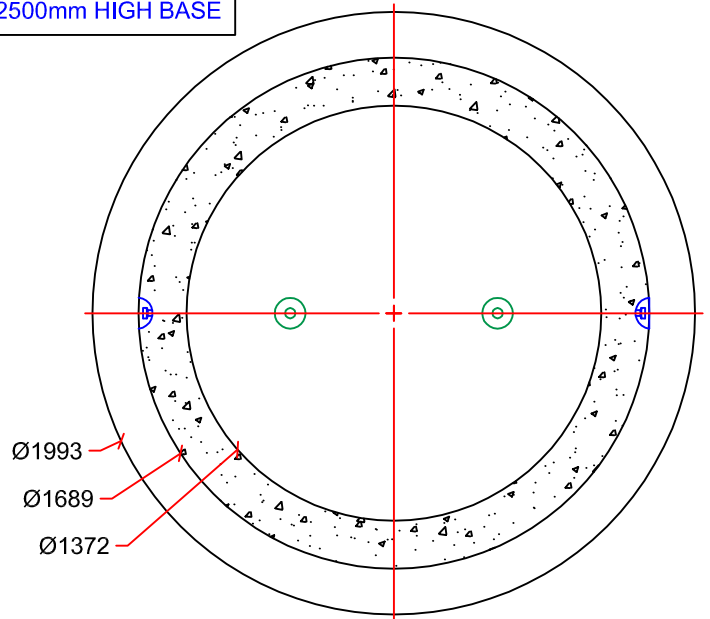


EXTENDED BASE

PIN LOCATION FOR 300mm HIGH BASE
 PIN LOCATION FOR 600mm-2500mm HIGH BASE




AVAILABLE IN 0.3m, 0.6m, 0.9m, 1.2m,
 1.5m, 1.8m, 2.1m, & 2.5m HEIGHTS



AVAILABLE IN 0.3m, 0.6m, 0.9m, 1.2m,
 1.5m, 1.8m, 2.1m, & 2.5m HEIGHTS

HEIGHT (H) (mm)	EXTENDED BASE MASS WITHOUT BENCHING (kg)	MAXIMUM PIPE SIZE FOR PREBENCH MANHOLES (mm)
300	2115	N/A
600	2710	300
900	3305	525
1200	3900	675
1500	4490	750
1800	5085	N/A
2100	5680	N/A
2500	6275	N/A

DRAWN BY:	AARON KLEMETS	1350mm MANHOLE BASES	 9265 OAK ST. VANCOUVER B.C. PH: 604 269-6700 FAX: 604 261-6751
SCALE:	NTS		
DATE:	NOVEMBER 16, 2015	ALL DIMENSIONS IN mm TWO 4T LIFT PINS PROVIDED AS SHOWN	
DRAWING #:	1350 MH BASES		
REVISION #:	REV. 0		
CHECKED BY:	TYSON DYCK		