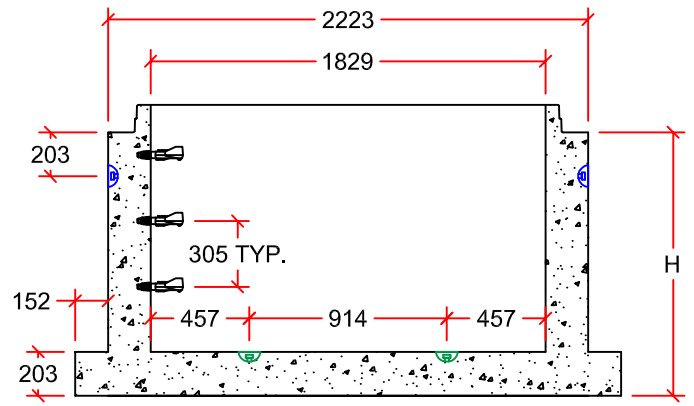
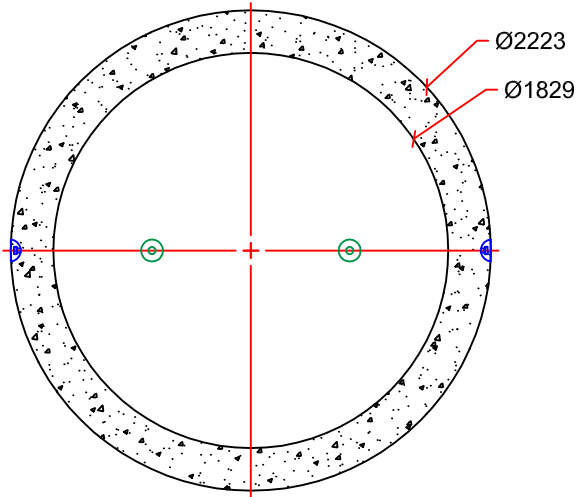


INNER POUR BASE

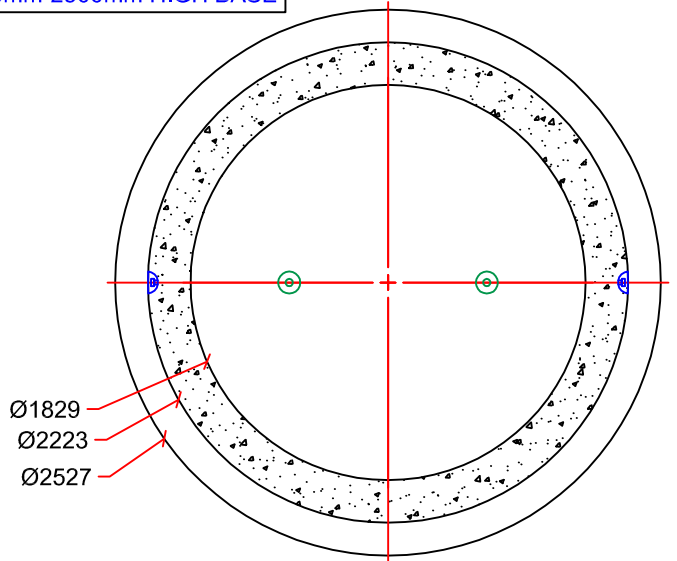


EXTENDED BASE

PIN LOCATION FOR 300mm HIGH BASE
 PIN LOCATION FOR 600mm-2500mm HIGH BASE



AVAILABLE IN 0.3M, 0.6m, 0.9m, 1.2m, 1.5m, 1.8m, 2.1m, & 2.5m HEIGHTS



AVAILABLE IN 0.3M, 0.6m, 0.9m, 1.2m, 1.5m, 1.8m, 2.1m, & 2.5m HEIGHTS

HEIGHT (H) (mm)	EXTENDED BASE MASS WITHOUT BENCHING (kg)	MAXIMUM PIPE SIZE FOR PREBENCH MANHOLES (mm)
300	3385	N/A
600	4325	300
900	5265	525
1200	6200	675
1500	7140	900
1800	8080	1050
2100	9020	1200
2500	9960	N/A

DRAWN BY:	AARON KLEMETS
SCALE:	NTS
DATE:	NOVEMBER 17, 2015
DRAWING #:	1800 MH BASES
REVISION #:	REV. 0
CHECKED BY:	TYSON DYCK

1800mm MANHOLE BASES

ALL DIMENSIONS IN mm
 TWO 8T LIFT PINS PROVIDED AS SHOWN

9265 OAK ST. VANCOUVER B.C.
 PH: 604 269-6700 FAX: 604 261-6751